

MULTIDERM



MultiDerm

MultiDerm represents a true breakthrough in exfoliation and infusion technology. Every aesthetic practice should integrate the MultiDerm because it offers exceptional results for multiple modalities.

Your patients will receive superior, more comfortable exfoliation than from traditional microdermabrasion and enjoy rapid exfoliation on any area of the body. No traditional microdermabrator can rapidly exfoliate décolleté, hands, lower legs and even backs like the MultiDerm.

The MultiDerm also provides exceptional topical infusion capabilities and can be used to treat Keratosis Pilaris or (KP) and pigmented lesions, while also improving the efficacy of chemical peels and topical treatments.

For many practices, the most important feature of the MultiDerm is its ability to remove the stratum corneum prior to laser and IPL procedures. By removing the stratum corneum, you allow more of the light energy to penetrate to the target which improves efficacy and safety.

Single Device for Multiple Modalities

The MultiDerm is a great device if you're starting a new practice since it provides multiple modalities in a single device. It's also a great compliment to your practice if you practice if you already have the traditional crystal or non crystal microdermabrator. The MultiDerm is the best way to provide exfoliation, topical infusion and pre-treatment for laser and IPL procedures.



EXFOLIATION

Microdermabrasion

The MultiDerm will give your patients an exceptional exfoliation treatment with less irritation than other devices. One reason the MultiDerm treatments are more comfortable for patients is the massage - like paddle delivery system. It doesn't cause damage to capillaries like traditional crystal-based or crystal-free microderm treatments. The MultiDerm also allows you to treat larger areas than traditional microdermabrators with less irritation. The exfoliation capabilities of the MultiDerm are superior to other devices on the market today. The ability to quickly and comfortably exfoliate a variety of areas of the body during one appointment allows you to reduce the time necessary to treat patients, as well as increase revenue.

INFUSION

Topical Infusion

The MultiDerm has superior infusion capabilities. Pre- and post- treatment topicals such as ALA are infused in greater quantities and to deeper layers of the skin allowing greater absorption for these expensive consumables. There is a waste factor with some other brands which allow large quantities of these expensive topicals to be suctioned off.

The Multiderm allows you to infuse any moisturizer or topical anesthetic manufactured today, thus reducing the time it takes for these topicals to take effect.

PRE-TREATMENT

Pre-Treatment

The MultiDerm should be an integral part of all patients' pre-treatment for laser and IPL procedures. By removing the stratum corneum prior to laser or IPL treatments, you can achieve better efficacy. The exfoliation process reduces the scatter coefficient of the epidermis making melanin, oxyhemoglobin and other targets more visible to the laser light. By enhancing these treatments, the MultiDerm saves you time and money. Best of all, your patients will see better results, providing higher overall patient satisfaction.

MultiDerm, LLC

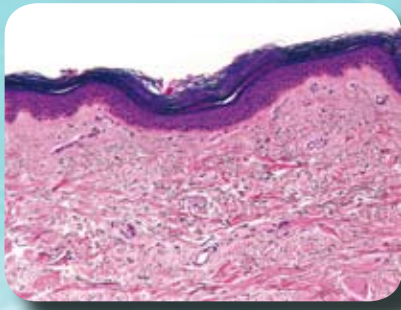
3116-C West Montgomery Rd., Suite 166, Maineville, OH 45039

(p) 866.499.3376 • (f) 513.842.8826

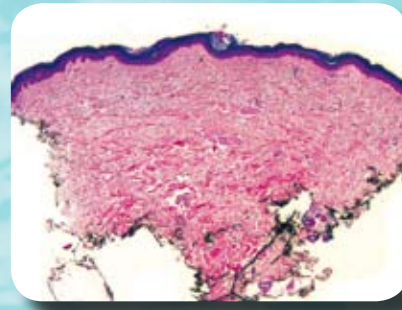
www.Multi-Derm.com

info@multi-derm.com

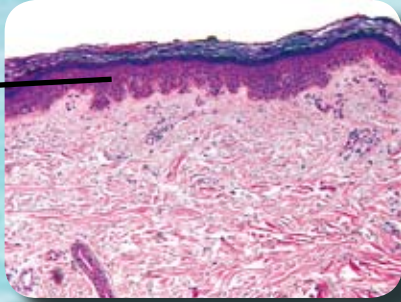
Pre #1



Pre #2

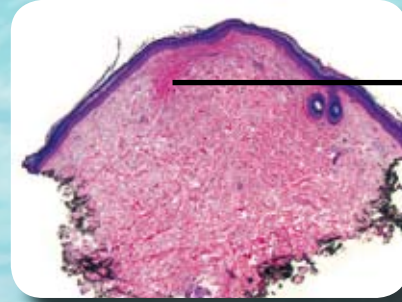


Post #1




Note: Thickened epidermis after one treatment

Post #2



Note: New Collagen forming after one treatment

	MultiDerm	Crystal-Free Microdermabrasion	Crystal-Based Microdermabrasion
Exfoliation	Face	Thorough, more comfortable.	Suction can damage capillary beds causing irritation; exfoliation often uneven. Highest level of patient discomfort
	Body	Variable paddle size allows for exfoliation anywhere on the body.	Impractical for body treatments. Small spot size limits exfoliation.
Infusion	Excellent choice for infusing topical anesthetics. Increases procedure efficiency due to shorter numbing times.	There is no clinical support for some brands' claims for infusion.	No infusion capabilities.
Other Topicals	Improves depth & quantity of penetration of ALA & other topicals.	There is no clinical support for some brands' claims for infusion.	No infusion capabilities.
Laser/IPL Pre-Treatment	Stratum corneum provides light scatter. Removal allows more light energy to the target, improving efficacy.	Impractical for body treatments. Small spot size limits exfoliation.	Impractical for body treatments. Small spot size limits exfoliation. Imbedded crystals are a contra-indication for any light-based therapy.

MultiDerm, LLC

3116-C West Montgomery Rd., Suite 166, Maineville, OH 45039

(p) 866.499.3376 • (f) 513.842.8826

www.Multi-Derm.com

info@multi-derm.com